



LMAS DISTRICT HEALTH DEPARTMENT 2008 COMMUNITY PLAN Summary

Priority - Cardiovascular Disease and Obesity

Goals

Community members will be aware of the risk factors, prevention efforts and early detection related to cardiovascular disease and obesity.

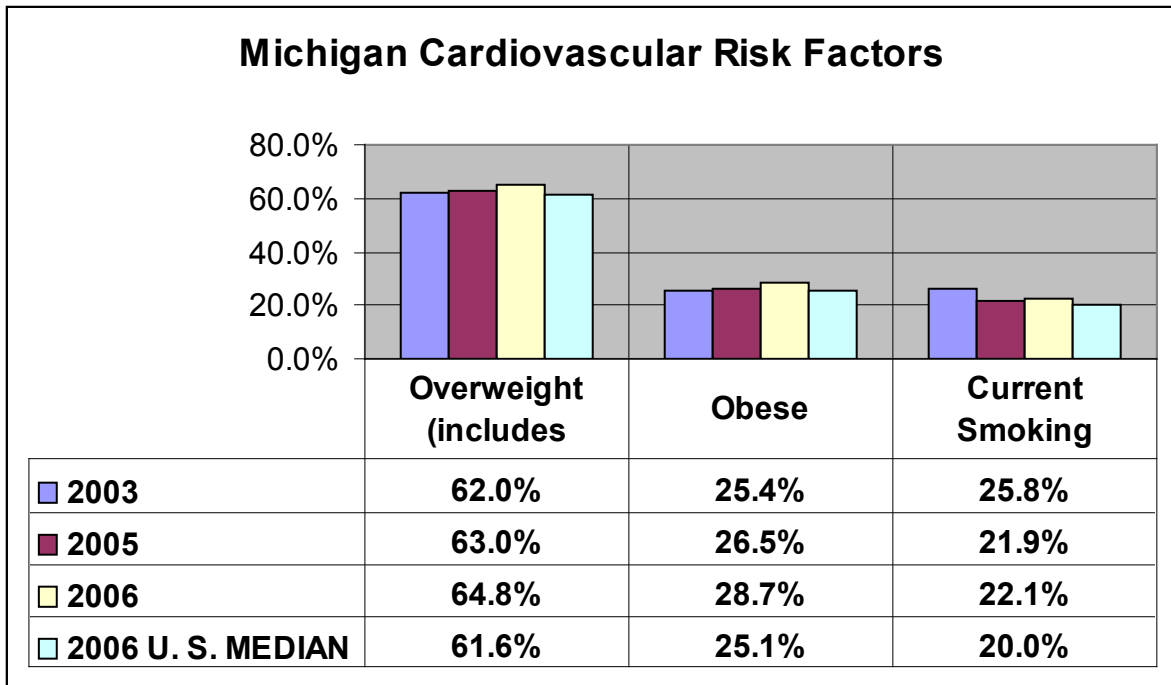
Objectives

- Utilize area youth to increase the community's awareness of the effects of tobacco and second hand smoke.
- Create a media campaign primarily focusing on men and the warning signs of cardiovascular disease.
- Educate community on the implementation of the smoke free ordinance.
- Identify at risk populations and educate regarding the effects of tobacco and offer assistance with community cessation resources.
- Promote healthy lifestyle information to clients.
- Participate in local efforts to promote healthy lifestyles

Strategies

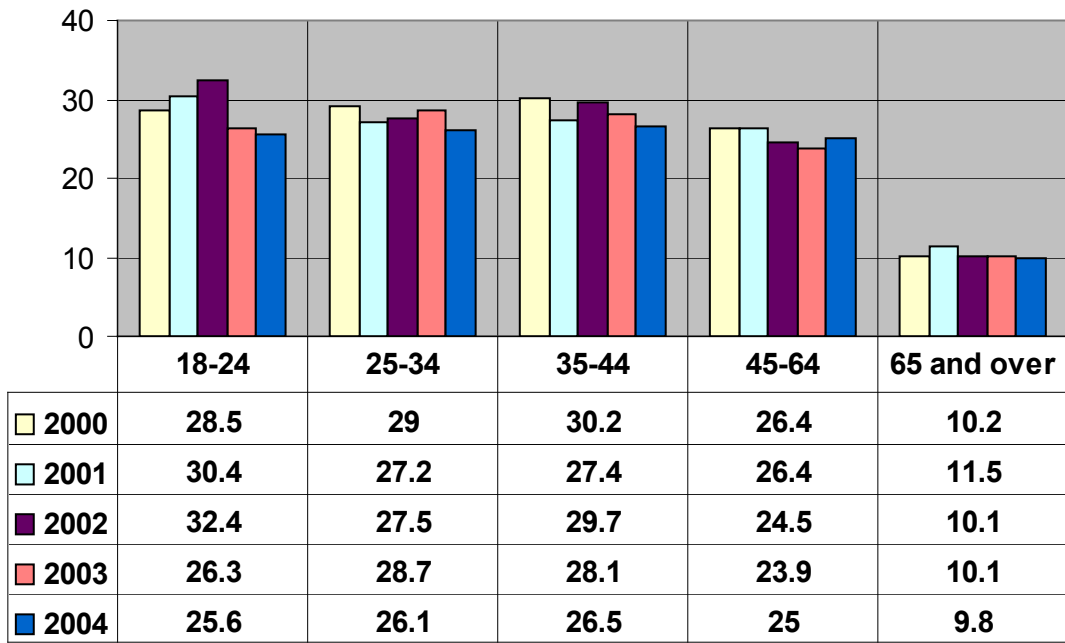
- At least one area youth coalition will be mobilized to complete a community awareness project regarding increasing the public's awareness of the effects of tobacco and second hand smoke.
 - **LMAS worked with Teens Against Tobacco Use Youth of Schoolcraft County to bring awareness to the effects of tobacco and second hand smoke through the recognition of smoke-free restaurants and apartment buildings of Schoolcraft County.**
- A newspaper article will be created and published in the four LMAS counties emphasizing the risks of cardiovascular disease.
 - **LMAS published a newspaper article entitled "Buck Fever" which included important cardiovascular safety tips. Another article was published in February 2008, entitled "LMAS Kicks off Healthy Hearts' Month in February."**
- LMAS will partner with local businesses to distribute information tags on snow shovels warning consumers of the cardiovascular risks associated with shoveling.
 -
- LMAS will provide MDOC "Expectant Mother's Quit Kit"/"Quit Kit" to expectant mothers identified through the WIC clinic in each office.

- **LMAS staff has continued to distribute the “Expectant Mother’s Quit Kit”.**
- LMAS will provide materials and items that highlight healthy lifestyle choices to WIC clients.
 - **Healthy Lifestyle informational handouts focusing on physical activity were provided to WIC clients. Clients were encouraged to participate in Project Fresh. Clients were also provided with beach balls to promote physical activity.**
- LMAS will participate in local community coalitions related to healthy lifestyles especially those that focus on childhood obesity.
 - **LMAS staff participated in local coalitions that focus on healthy lifestyles in Mackinac, Alger and Schoolcraft Counties.**
 - **LMAS staff played a key role in organizing a health fair for the high school students at Munising Area Schools**



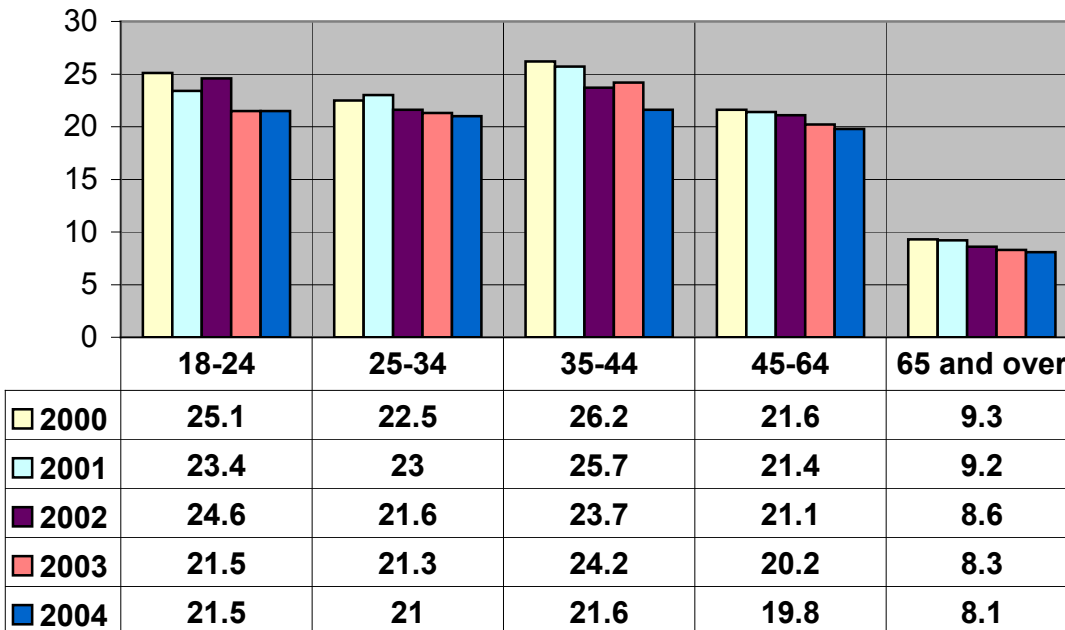
Source: Behavioral Risk Factor Surveys, MDCH, 1998-2003, 2005, and 2006; U.S. BRFS 2006 Data

**Males - Percent of Current Smokers
(18 yrs. and over)**



Source: National Center for Health Statistics, www.cdc.gov/nchs/fastats/smoking

**Females - Percent of Current Cigarette Smokers (18 yrs.
and over)**



Source: National Center for Health Statistics, www.cdc.gov/nchs/fastats/smoking

Michigan Adult Current Smoking Rate (2006): 22.1%

(Source: MDCH, Michigan Behavioral Risk Factor Survey, 2006)

Michigan Prenatal Smoking Rate (2003): 14.4%

(Source: MDCH, Division for Vital Records and Health Statistics and Centers for Disease Control and Prevention; Smoking Attributable Morbidity, Mortality and Economic Costs (SAMMEC), 2003.)

Impact of Smoking: Luce, Mackinac, Alger, and Schoolcraft Counties 2003

- ✓ Deaths caused by smoking: 77
- ✓ Deaths caused by Second Hand Smoke: 9
- ✓ Fires due to smoking materials: 4
- ✓ Adult Smoking Rate: 33.7%

Source: Michigan Department of Community Health Vital Statistics and SAMMEC 3.1. Fire in Michigan, Department of State Police- Fire Marshall Division.

Priority - Access to Care

Goals

Community will be knowledgeable about resources available related to accessing health care.

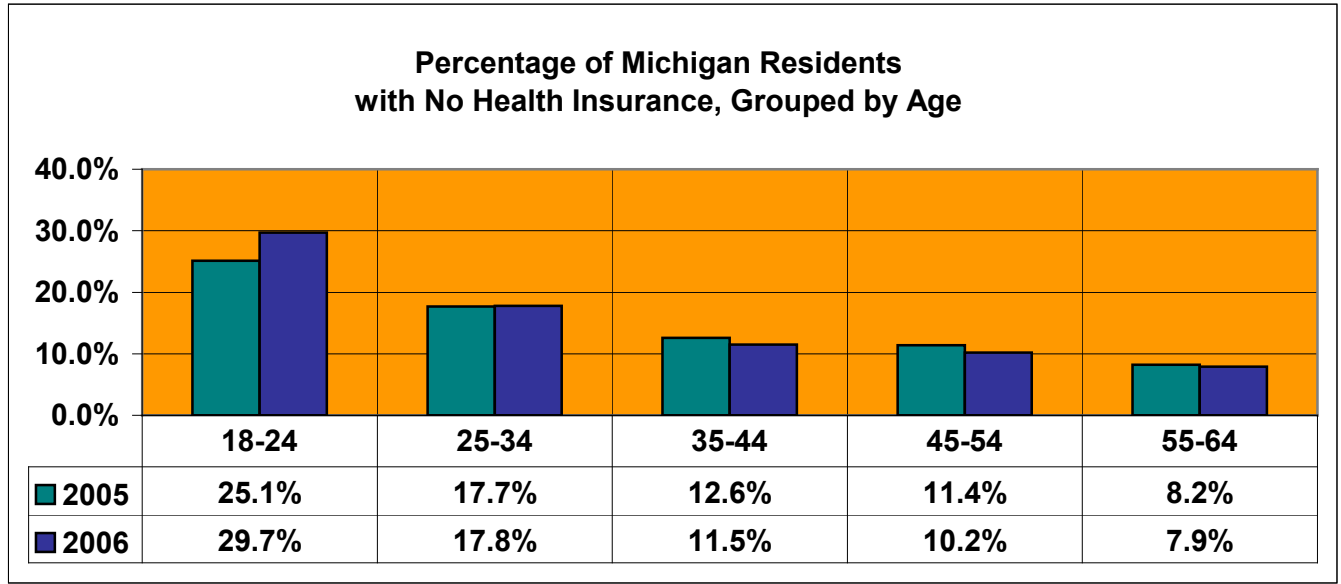
Objectives

- LMAS will collaborate with stakeholders to begin to address the community's needs related to health care access and work to increase the community's awareness regarding this issue in Alger County.
- LMAS will collaborate with stakeholders to increase awareness of access to care services in Luce, Mackinac and Schoolcraft Counties and actively refer clients.
- LMAS will collaborate with access to care systems to support efforts to impact the burden of infectious and chronic diseases in vulnerable populations in the community.

Strategies

- Clinic staff will identify clients that have barriers to accessing care and assist with the application process for insurance coverage, provider identification or other barriers as identified.
 - **LMAS assessed all clients and made appropriate referrals to Access to Care, Plan First!, MiChild, CSHCS and Medicaid. LMAS assists clients with applications for Plan First!, MiChild, CSHCS and Medicaid.**
- LMAS will participate in community workgroups to assist in identifying barriers to accessing care and creating an access to care framework.
 - **An LMAS staff person is on the Board in Schoolcraft.**
 - **An LMAS staff person participated in teleconferences regarding the implementation of Access to Care in Alger County.**
- LMAS will promote MI Child, Plan First, CSHC and other health care resources in their clinics and community.
 - **LMAS assessed all clients and made appropriate referrals to Access to Care, Plan First!, MiChild, CSHCS and Medicaid. LMAS assists clients with applications for Plan First!, MiChild, CSHCS and Medicaid.**
 - **LMAS staff participated in community events where access to care services were promoted.**
- LMAS will refer potentially eligible clients to Access to Care Programs available in the community.
 - **LMAS has active Access to Care Programs in Luce, Mackinac and Schoolcraft Counties and makes referrals to those programs.**
- LMAS will offer a limited number of vaccines to Access to Care clients

- LMAS provided flu vaccine to Access to Care clients in 2006, 2007 and 2008. LMAS also collaborated with Access to Care agencies to offer the shingles vaccine to Access to Care clients



Source: MDCH Behavioral Risk Factor Survey 2005, 2006

Uninsured Estimates (2000) for Children under 18 years of age					
	Luce	Mackinac	Alger	Schoolcraft	Michigan
Below Poverty	47	54	44	50	60,532
100-199% Poverty	56	117	64	82	59,546
Over 200% Poverty	50	104	76	68	109,438
All Income Levels	153	276	184	200	229,516
Total Population (19 years and younger)	1657	2907	2265	2232	2,884,065

Source: Primary Health Care Profile of Michigan

Priority - Substance Use and Abuse

Goals

The community will have increased awareness of substance use and abuse issues and how to access services.

Objectives

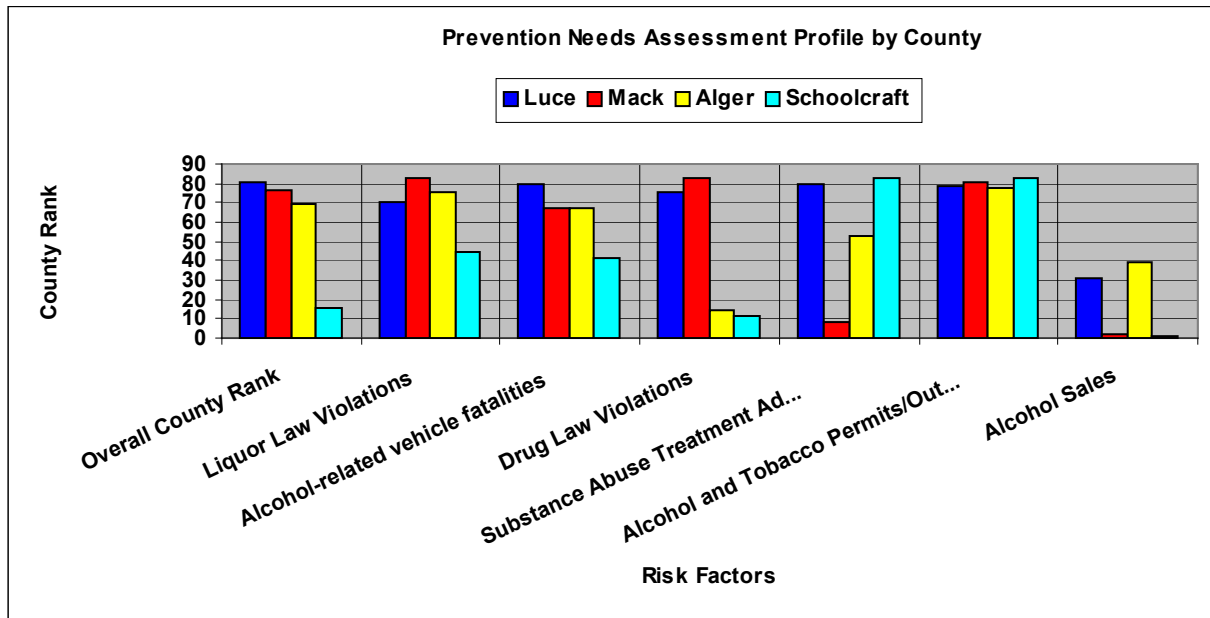
- LMAS will collaborate with community partners to provide programs that will target high-risk groups.
- LMAS will collaborate with community partners to identify emerging substance abuse issues and create action plans.

- LMAS will collaborate with community correction agencies to provide substance abuse treatment for incarcerated clients.

Strategies

- LMAS will utilize youth surveys and other surveys made available to identify behaviors that put the community at risk.
 - **LMAS utilized the 2008 Teen Asset Survey, the Side Bar Survey of Luce and Schoolcraft Counties as well as other surveys from community partners to identify community risk.**
- LMAS will participate in activities that promote substance abuse awareness in the community, like Red Ribbon Week, Candle Light Vigil, National Save a Life, UP Youth Conference, Action Troop, etc.
 - **LMAS participated in Red Ribbon Week by working with local elementary students in all four counties to identify fun and safe activities they enjoy instead of using drugs or alcohol. Many of the schools allowed the students to build a “Red Brick Wall” against Drugs.**
 - **LMAS worked with local youth to ensure they were able to attend the UP Youth conference. The students were given the opportunity to learn more about issues surrounding substance abuse and to make healthier choices.**
- LMAS staff will work with local courts, schools and community centers to promote prevention programs, as designated in the Prevention Plan and treatment services.
 - **LMAS served local courts by offering the “Prime for Life” Under 21 Program to juvenile probate offenders charged with substance abuse crimes. LMAS also provided prevention programming that included Tar Wars, Hazards of Tobacco and Protecting Me/Protecting you, in all four counties. Lastly, LMAS promoted issues surrounding the prevention of substance abuse at community events, including Parent-Teacher conferences, teacher in-service meetings and Alternative Education classes.**
- LMAS will develop and maintain a marketing committee to facilitate community education.
 - **LMAS has maintained a marketing committee that is held monthly. The Committee identifies program marketing needs, community education needs and implements articles to be placed or marketing items to be distributed.**
- LMAS will collaborate with partnering agencies/community groups to provide community awareness regarding issues of concern within the scope of Community Health Plans.
 - **LMAS participates in several partnerships with community groups, including HSCB, AFCC, SCCC, Prescription Drug Abuse Prevention Workgroup, MCRUD, Sense of Life, Yellow Ribbon, Children’s Trust Fund and The Homeless Task force.**
- LMAS will develop media messages to promote awareness and educate the public regarding substance use and abuse.
 - **LMAS developed several media messages regarding Underage Drinking prevention, Tobacco prevention and effects of Second-hand smoke and other issues surrounding the use of drugs by means of billboards, radio advertisements and newspaper articles.**
- LMAS will collaborate with local coalitions to provide alcohol and drug free events.
 - **LMAS collaborated with the Michigan Coalition to Reduce Underage Drinking (MCRUD), as well as Teens Against Tobacco Use (TATU) to provide safe, alcohol and drug free events such as the graduation “Lock-In” for Schoolcraft County and prom anti-drinking and driving visual display of a car wreck. LMAS also hosted a Town Hall discussion on underage drinking in Luce, Mackinac, Alger and Schoolcraft Counties.**
- LMAS will be involved in two community groups to identify emerging substance abuse issues and create action plans.

- LMAS has been involved with AFCC and SCCC, both of which have identified Prescription Drug abuse as an on-going and persistent issue within their communities. As a result, LMAS formed the Prescription Drug Abuse Prevention Workgroup in Schoolcraft County and will be starting the same workgroup in Alger County in 2009.
- LMAS will collaborate with at least one county community corrections agency to provide jail diversion services.
 - LMAS collaborated with the EUP Community Corrections and has been available to provide the Drunk Driving Jail Diversion program for Mackinac County.
- LMAS will collaborate with Michigan Department of Corrections to provide Advanced Substance Abuse services in at least one of the five prison facilities currently served by LMAS.
 - Although LMAS submitted an initial proposal to deliver the ASAT Module for at least one of the prison facilities, due to limited funding this proposal was not accepted.



Source: Michigan Department of Community Health, Prevention Needs Assessment Profile for Luce, Mackinac, Alger and Schoolcraft Counties. Overall county rank is based on the average of 19 risk scores, equally ranked: 1=lowest risk; 83=highest risk.

Priority - Women's Health Issues

Goals

Women will have a greater awareness of health issues that affect them and the resources available to them.

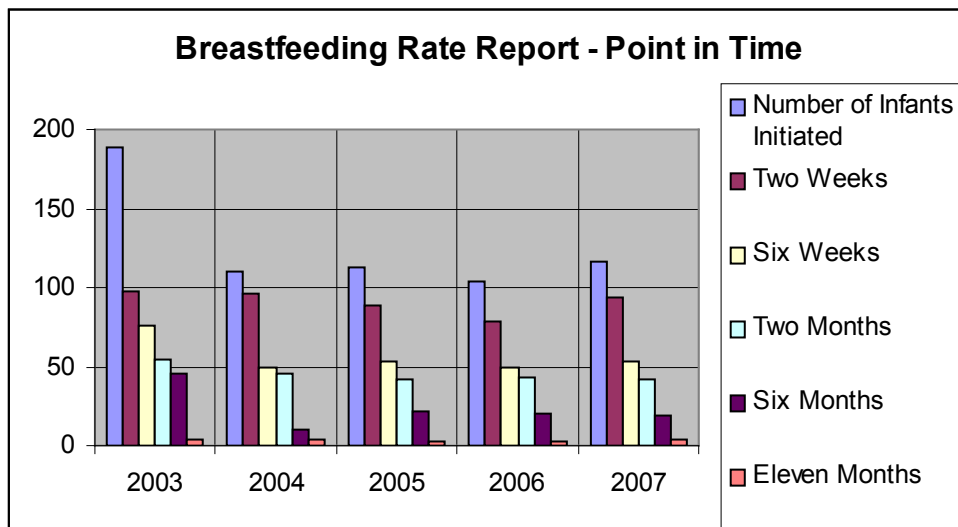
Objectives

- Educational materials will be developed and/or obtained for women that highlight health issues including chronic and infectious diseases.
- LMAS will collaborate with other community partners to plan community events such as local health fairs.
- LMAS will provide educational information on women's health and prevention to clinic clients, targeting teen clients and pregnant women.

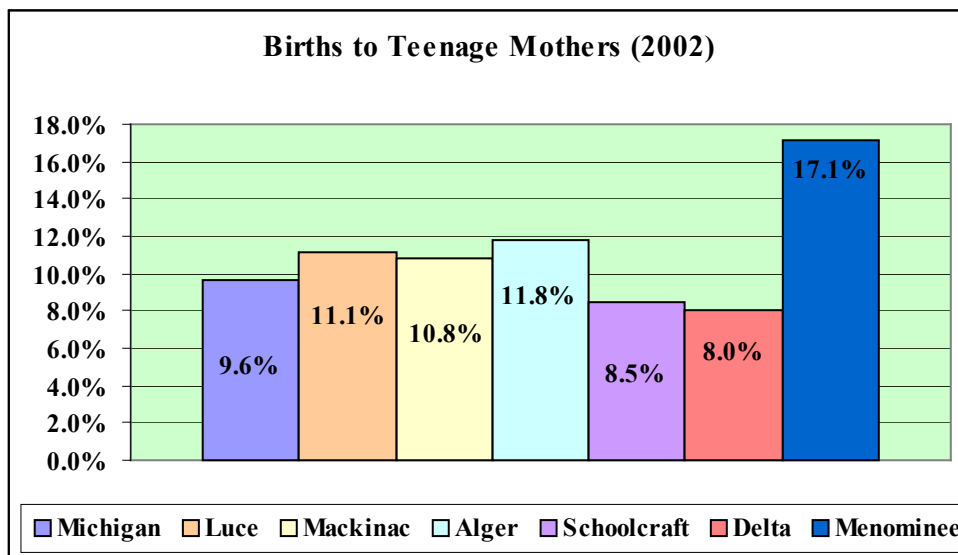
Strategies

- Brochures/handouts highlighting reproductive health issues and pregnancy issues will be developed and distributed.

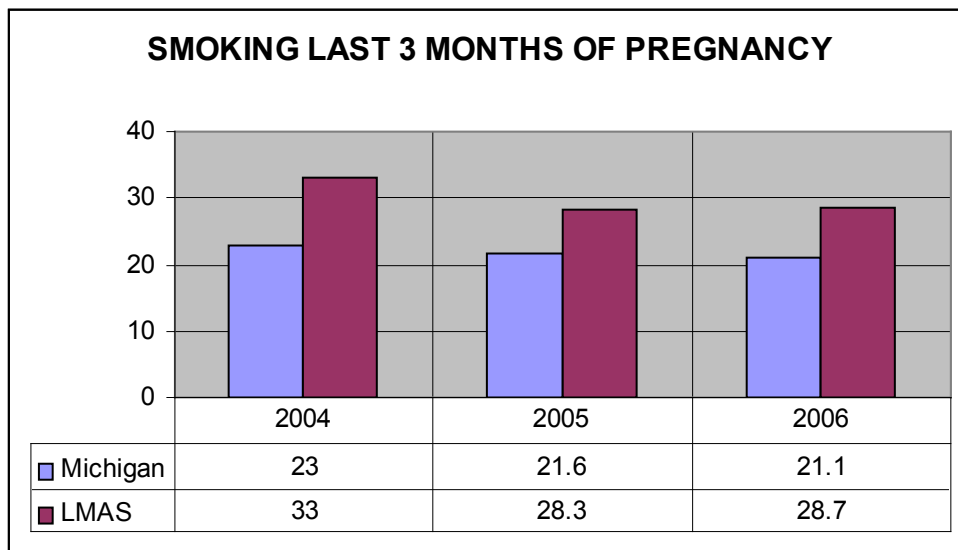
- **Brochures were distributed to Family Planning and Maternal Infant Health Program (MIHP) clients.**
- Brochures/handouts highlighting chronic health issues and promoting health life styles will be developed and distributed.
 - **Efforts were taken to distribute health lifestyle information to Family Planning clients.**
- Educational encounters will be offered to local schools, alternative education sites or youth groups.
 - **Educational encounters occurred in four alternative schools and 2 area high schools**
- LMAS staff will assist in the planning and participate in community events like health fairs.
 - **LMAS participated in the health fairs in Alger and Schoolcraft Counties and participated in Project Connect events in Luce and Mackinac Counties.**
- LMAS will participate in local Breastfeeding Network teleconferences.
 - **LMAS had staff attend the UP Breastfeeding teleconferences.**
 - **LMAS's Schoolcraft Office is now hosting a site.**
 - **Two LMAS staff attended a week-long training on breastfeeding.**
- LMAS staff will be updated regarding issues related to post-partum depression.
 - **LMAS staff attended a training on Post Partum depression and shared information with other Maternal Infant Health staff and WIC staff.**
- LMAS will distribute an article highlighting the importance of breastfeeding to local media.
 - **LMAS distributed an article highlighting breastfeeding to local newspapers.**
- LMAS will in-service Maternal and Infant Health (MIHP) staff on reproductive health issues.
 - **Not completed in 2008**
- LMAS will develop and distribute "ABC" fliers and literature to clients and other community members and agencies.
 - **Promotional business cards were developed.**
- LMAS staff will be involved with "family life" committees when invited by area schools.
 - **Local school committees did not meet in 2008.**
- LMAS staff will promote programs that support Women's Health such as Family Planning, BCCCP and the Maternal Infant Health Program
 - **LMAS promotes Women's Health Programs through WIC and immunizations.**



Source: Michigan Dept of Community Health, Breastfeeding Initiation Duration Report - Point in Time, BF Rate Summary - 8/08/07



Source: Primary Health Care Profile of Michigan



Source: WIC Annual Report Data, 2007