



ANNUAL REPORT FISCAL YEAR 2024



Approved on March 3, 2025
by the LMAS Board of Health



Message to the Community

Dear Community Members,

The LMAS District Health Department is pleased to present our Fiscal Year 2024 annual report to the citizens of Luce, Mackinac, Alger and Schoolcraft Counties. We welcome you to review this report and learn about our accomplishments.

Many exciting developments took place at LMAS during the past year. A major achievement was the launch of our new customer satisfaction survey. The survey provides residents with an opportunity to share feedback on our services and suggest areas for improvement.

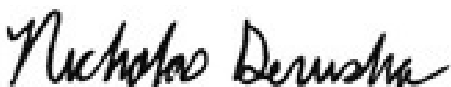
LMAS also spent a significant amount of time updating our strategic plan. Our Quality Improvement Committee took the lead on this project. With the help of a strategic planning specialist the team sought feedback from staff and identified priority areas, goals, objectives, and strategies to guide the department's efforts over the next three years. The main priority areas identified were communication, prevention, staff education and resources.

We are proud to let you know that we continued to expand services within our communities. We now offer school based health services in more schools, we have enhanced support for those suffering with substance use disorder, added to our home visiting services, and added community health workers to assist in several program areas.

While we were continuing to grow and expand, we underwent our Cycle 8 accreditation review and our annual financial audit. The accreditation review for this cycle was technical assistance oriented, which allowed our staff to familiarize themselves with the process and to identify areas where we excel or have opportunities to improve. We had another perfect financial audit that highlighted our commitment to strong financial health.

In closing, I thank our many community partners, the board of health, county commissions and the staff at LMAS who are so very dedicated to providing high quality programming to the citizens that we proudly serve.

Respectfully,



Nicholas Derusha, MPA, REHS, CFPH



Staff Awards

Hometown Hero Award

Monica Eriksen, Harm Reduction Nurse



Monica was presented a Hometown Hero award in April 2024. The MDHHS Hometown Hero Award is presented to individuals and/or organizations that have made significant and measurable contributions to preserve and improve their community's health. Monica has been an incredible hero in her community, providing compassionate health care and support to residents while pioneering new harm reduction services.

Roy R. Manty - Distinguished Service Award

Dr. James Terrian, Deputy Medical Director



The agency's former medical director, James Terrian, was honored with the Roy R. Manty Distinguished Service Award in October 2023. The acknowledgment is the highest individual award given by the local public health community and bestowed to one citizen in Michigan annually. Dr. Terrian has served the public for 52 years and continuously worked to improve the health of the public in the Eastern Upper Peninsula.

Michigan Association of Local Public Health

Distinguished Service Award

Nicholas Derusha, Health Officer



Nick Derusha received the MALPH Service Award in October 2023 for his time as president of MALPH during the COVID-19 pandemic. Nick's calm demeanor, public health expertise, and wise counsel steadied the ship and increased MALPH's influence with various state departments and the Office of the Governor. MALPH members and staff will always be grateful for his capable leadership during a tumultuous time.

Leadership

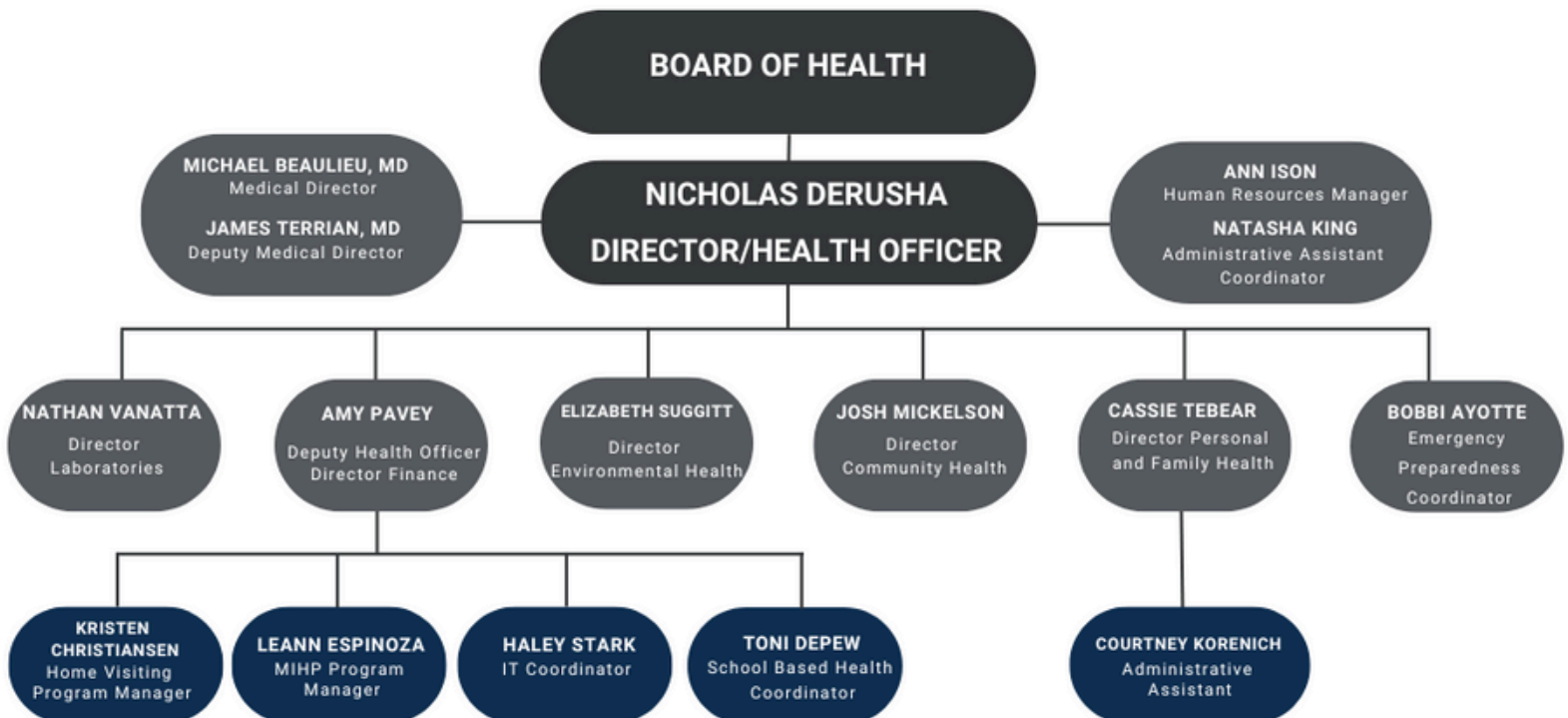


LMAS District Health Department is governed by an eight person board of health, comprised of two commissioners from each of the four counties in our region.

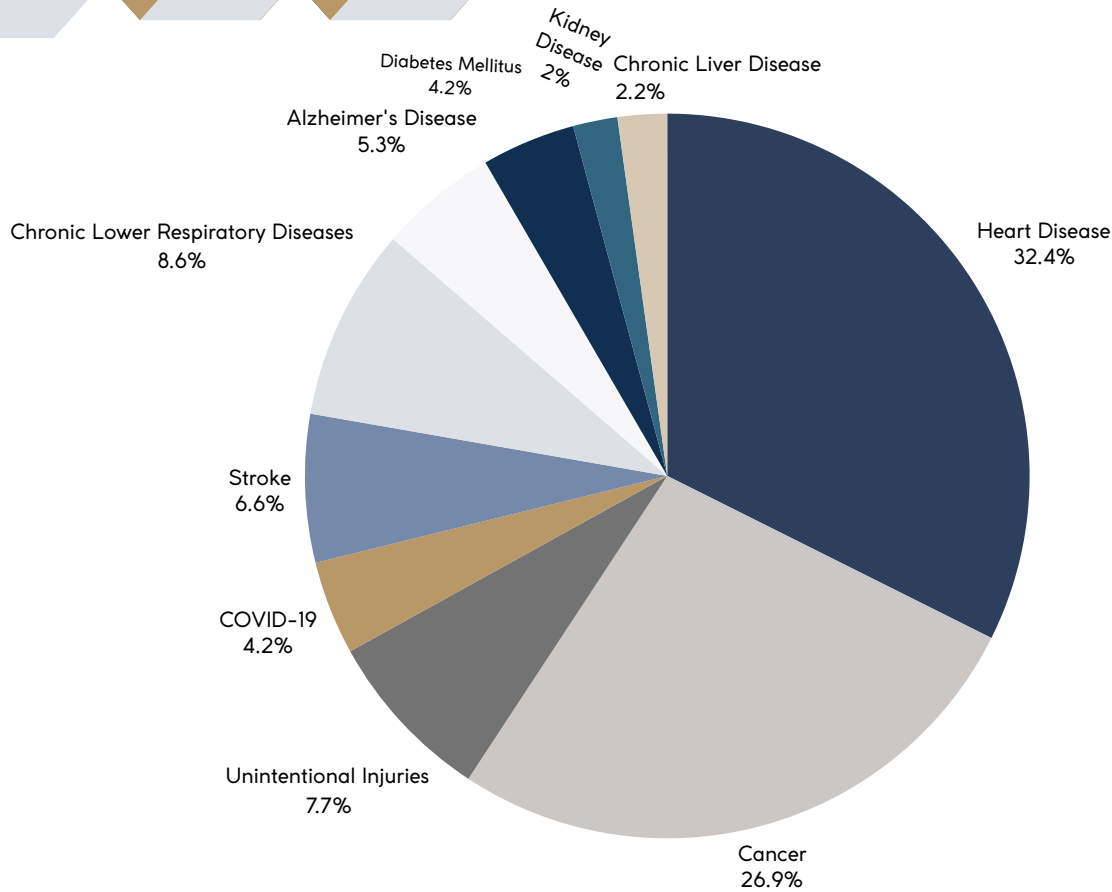
Left to Right: Brandon Wheeler (Luce County), Craig Reiter (Schoolcraft County), Nancy Morrison (Luce County), Corina Clark (Mackinac County), Dean Seaberg (Alger County), Mickey Rondeau (Alger County).

Not Pictured: Judy St. Louis-Scott (Mackinac County) and Paul Walker (Schoolcraft County)

LMAS DISTRICT HEALTH DEPARTMENT ORGANIZATIONAL CHART



County Health Profile



Rank MI	Cause of Death	Rank for District	Number of Deaths			Age-Adjusted Rate of Deaths		
			District	MI	U.S.	District	MI	U.S.
1	Heart Disease	1	147	26,165	681,158	243.2	199.2	162.1
2	Cancer	2	122	20,915	613,369	184.5	151.9	143.6
3	Unintentional Injuries	4	35	6,206	223,438	87.5	56.7	62.8
4	Stroke	5	30	5,787	162,653	54.7	44.5	38.9
5	Chronic Lower Respiratory Diseases	3	39	5,129	145,377	60.5	37.1	33.8
6	Alzheimer's Disease	6	24	4,063	114,054	38.3	32.1	27.4
7	Diabetes Mellitus	7**	19	3,160	95,210	*	23.4	22.6
8	Kidney Disease	10	9	1,892	55,240	*	14.3	13.1
9	COVID-19	7**	19	1,633	385,257	*	12.5	91.5
10	Chronic Liver Disease and Cirrhosis	9	10	1,597	52,224	*	13.1	13.2
TOTAL			612	103,359	3,090,964	1,055.6	801.1	753.3

Note: Rates are per 100,000 population. The causes of death are listed in order of the 10 leading causes of death for Michigan residents in 2023. Death records with gender not stated are included only in the "Total" column.

: An asterisk () indicates that the data does not meet standards of reliability or precision.

Data displayed are by the underlying cause of death which is the condition giving rise to the chain of events leading to death. Causes of death are classified in accordance with the Tenth Revision of the International Classifications of Diseases (ICD-10), a coding structure developed by the World Health Organization. This revision has been used to classify deaths occurring on or after January 1, 1999. The ICD-10 codes are grouped into broader categories for the causes listed in this table in order to classify these selected causes of death (e.g., ICD-10 codes COO-C97 are used to indicate deaths due to cancer).

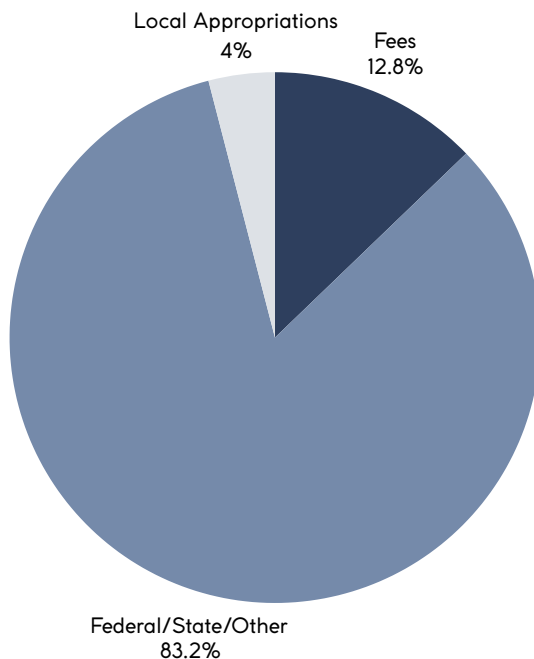
Source: 2023 Geocoded Michigan Death Certificate Registry. Division for Vital Records & Health Statistics, Michigan Department of Health & Human Services; Population Estimate (latest update 7/2020), National Center for Health Statistics, U.S. Census Populations With Bridged Race Categories. 2020-2022 population is 2020 CDC Bridge estimates proportionally fitted to U.S. Census population estimates. Centers for Disease Control and Prevention, National Center for Health Statistics. Provisional Underlying Cause of Death 2023 on CDC WONDER Online Database, released 2024.

** Tied Rank for District

Financials

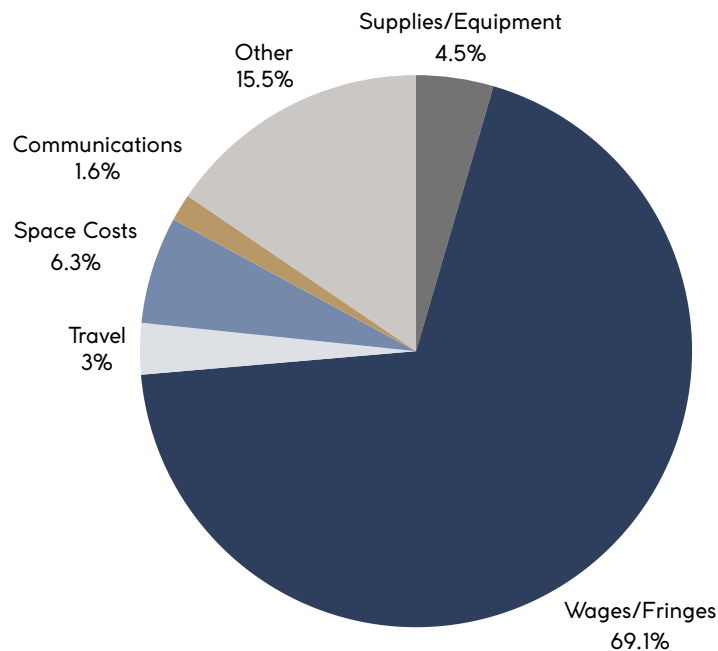
Preliminary Pending Annual Financial Audit

Total Revenue	\$7,734,637
Total Expenses	\$7,725,902
Net Revenue/Expenses	\$8,735



FY 2024 Revenue

Fees	\$990,208
Federal/State/Other	\$6,432,446
Local Appropriations	\$311,983
TOTAL	\$7,734,637



FY 2024 Expenditures

Wages/Fringes	\$5,339,367
Supplies/Equipment	\$349,870
Travel	\$232,039
Space Costs	\$484,820
Communications	\$122,491
Other	\$1,197,315
Total	\$7,725,902

Community Health

PRIME FOR LIFE

LMAS in partnership with Luce County Probation and Tahquamenon Area School, launched an 8-hour program for students referred to probation for substance use in school. The first sessions took place in July 2024 with four attendees. The Prime for Life program is research-based and aims to reduce high-risk drug and alcohol problems. It helps participants understand how biology influences their choices and encourages them to reflect on past decisions. The program also teaches skills for making low-risk choices and creating a plan for positive change in the future.

Botvin Life Skills

Number of Participating Schools
10

Number of Middle School Students
(6th - 8th)
639

Number of Elementary Students
(3rd - 5th)
197



LMAS installed a free Narcan distribution box at Helen Newberry Joy Hospital to support overdose prevention efforts. In the first three months since its installation, a total of 32 boxes were taken

Narcan Training

- 154 individuals trained in Fiscal Year 2024.
- The following groups were trained: Local Coalitions, LMAS Staff, Manistique Health Occupation Classes, Fentanyl Awareness at Manistique Area Schools, Pictured Rocks Cruise Staff, Mather Elementary and St Francis Schools.
- One school implemented a Naloxone Emergency Kit, bringing the total to 15 schools, including eight in Chippewa County.



Harm Reduction and Peer Recovery

Clients have been referred from drug/mental health courts, jails, local providers, medicated assisted treatment or self-referrals. As part of our harm reduction and peer recovery services, clients are offered other resources including inpatient treatment, food resources, housing, transportation, connections to primary care and relapse prevention planning.

Medication Assisted Treatment

Through Northcare funding, LMAS launched a Medication Assisted Treatment (MAT) program. A provider from Helen Newberry Joy Hospital now visits the Schoolcraft and Alger County offices monthly to meet with clients seeking medication for substance use disorder. During these visits, clients also meet with a community health worker to address other needs. Since its start in July, twelve individuals have enrolled in the program, which was previously unavailable in these counties.

Harm Reduction
Clients
50

Harm Reduction
Encounters
684

Peer Recovery
Clients
29

Peer Recovery
Encounters
216

Syringes
Distributed
19,940

Syringes
Collected
19,850

Community Health

Luce County Communities That Care

Luce County Resource Fair

The resource fair was a successful partnership between Upper Peninsula Health Plan, Upper Peninsula Health Care Solutions & LMAS, alongside 20 other agencies and organizations. A total of 163 community members attended the event. Some of the resources that were made available were diapers, blood pressure checks, cold and flu vaccinations, free haircuts and the chance to participate in raffle tables featuring exciting prizes such as tablets, an InstaPot, laundry and cleaning supplies, and gift cards.

Sportsman Club Tackle Party

The Tackle Party an annual event for children, recently celebrated its 68th year. This event focuses on introducing youth to outdoor activities while providing them with free outdoor gear. This year, over 200 fishing poles were distributed. The annual event was expected to be in its final years, however a new collaboration with Communities That Care and other local groups ensures its future.

Mental Health Awareness Tattoo Event

The CTC Partnered with Wyld Flower Tattoo Studio to host a tattoo event with portions of the proceeds going towards professionals receiving mental health trainings in Luce County.



Newberry Farmers Market

The Newberry Farmers Market had its best year of vendor participation, with an average of 12 vendors per market and several guest vendors throughout the season. The introduction of loyalty punch cards was a hit and will continue next season. Customer feedback was positive, with many praising the product variety and coupon acceptance. Overall, this has been our best season so far, and we look forward to building on this success next year.



LMAS hosted multiple Medication Take Back Days throughout the district. In seven separate events, the total amount collected was 57 pounds.

School Based Health

LMAS operates two school based child and adolescent health centers. The CAMP is located at Tahquamenon Area Schools in Newberry, Michigan, and the Saints Health Center is located at St. Ignace Area Schools in St. Ignace, Michigan. Both centers are designed specifically to serve students aged 5 through 21, offering a range of medical and mental health services. These services are provided by a Nurse Practitioner or Physician Assistant and an Adolescent Therapist. In September 2024, the Saints Health Center underwent a transformation, converting from an E3 program to its current form. Following this change, Chelsea Schummer, PA began seeing patients immediately.



Counseling
And Medical Place
Your School Based Health Center

Unduplicated Users	183
Medical Visits with Nurse Practitioner	264
Visits with Mental Health Provider	462
Immunizations Administered	110



SAINTS HEALTH CENTER

-Child and Adolescent Health Center-

Unduplicated Users	71
Medical Visits with Physician Assistant	27
Visits with Mental Health Provider	650

School Based Health

LMAS operates four Expanding, Enhancing Emotional Health (E3) programs throughout the district. The purpose is to provide comprehensive mental health services to children & adolescents in a school based location by a licensed, masters prepared mental health professional. This is a year round program, supporting ages 5 to 21. LMAS has sites at the following schools:

- Engadine Consolidated Schools
- Les Cheneaux Community Schools
- Manistique Area Schools
- Munising Public Schools



Fiscal Year 2024	Unduplicated Users	Total Visits with Mental Health Provider
Engadine Consolidated Schools	31	344
Les Cheneaux Community Schools	28	290
Manistique Area Schools	52	525
Munising Public Schools	68	874



Number of Sports
Physicals/Well Child
Exams
103

Number of
Immunizations
Provided
110

7 Mental Health
Providers in the Four
Counties

Emergency Preparedness

The LMAS Emergency Preparedness (EP) Coordinator is dedicated to addressing public health threats, including disease outbreaks and pandemics. We collaborate closely with community partners to provide training, develop strategic plans, and conduct exercises. Our goal is to ensure that our communities are well-prepared and equipped to effectively respond to public health emergencies. Throughout Fiscal Year 2024, EP completed Memorandums of Understanding with our local pharmacies and continued to supply our communities with COVID-19 test kits free of charge.

Training and Conferences Attended

- PSY-COM Self Defense Training
- Mobile Lab Unit Training
- LMAS Leadership Trainings and Coaching Sessions
- Great Lakes Homeland Security Conference and Expo
- Critical & Emergency Response Communication Training
- Upper Peninsula Homeland Security Planning Board Intelligence and Information Sharing Symposium
- LTC Workshop
- MALPH Day at the Capital Conference
- MICIMS Training (Michigan Critical Incident Management System)
- Alger County Search and Rescue Conference
- CDC CASPER Training
- LTC Conference
- Public Health Law 601

Tabletop Exercises

Anthrax in Aisle 5 exercise was held on October 3, 2023 at the Marquette Township Fire Department. The objectives of the exercise were to have participants identify how to manage and sustain the public health response and have successful medical countermeasure dispensed to identified populations.

The Measles exercise was held on May 3, 2024 at the LMAS Luce County office and was lead by the LMAS Emergency Preparedness Coordinator. The exercise used was a Measles outbreak in a school. LMAS staff were involved along with MDHHS, and the Region 8 Epidemiologist.

54 N95 Fit Tests
Completed

Exercises, Drills, and Workshops

- Integrated Preparedness Planning Workshop
- R8CE to Excellence
- Fire Drills at LMAS Offices
- LMAS All Staff Meeting EP/Safety Game and EP Presentation
- 800 MHz Radio Checks

4,020
COVID-19 Test
Kits Distributed



Bobbi Ayotte, EP Coordinator with Local Emergency Managers at the Region 8 Homeland Security Planning Board Meeting



LMAS staff participated in a CPR training course, which was taught by the EP Coordinator.

Home Visitation

MATERNAL INFANT HEALTH PROGRAM (MIHP)

A Registered Nurse or Master Social Worker provides home visits to pregnant women and/or infants up to one year of age with Medicaid as their primary insurance. Services include: Assistance with prenatal care, education and support for pregnancy, labor, delivery, and breast feeding support. Assistance with healthy lifestyles changes, including diet and smoking cessation. Referral support for substance use treatment, domestic violence, counseling and safe and stable housing resources. We strive for healthy pregnancies, good birth outcomes, and healthy mothers and infants.



42

Number of Intake Assessments



486

Number of Total Visits



30

Number of Discharges

UP MOM - NAS EXPANSION GRANT



154

Number of
Home Visits

14

Number of Families
Served

UP HOME VISITING NETWORK



U.P. Home Visiting Network

UPHCS

Full-time

Coordinator in
FY 2024

77

Referrals Received



HEALTHY FAMILIES U.P.

Healthy Families U.P. (HFUP) is an accredited home visiting program, providing quality and effectiveness in home visiting services. Services are offered to new and expectant families. The focus of services being to promote positive parent child interactions, work toward self-advocacy and sufficiency, child development and school readiness.

This year, HFUP had valuable opportunities to contribute to impactful projects. The Program Manager collaborated with a group from the University of Michigan School of Social Work to introduce a Cognitive Behavioral Therapy (CBT) app to staff. Staff provided feedback on the training for home visitors and suggested verbiage for use with families.

Referrals/
Screens
114

Assessments
Completed
44

New Families
Enrolled
48

Home Visits
Completed
1,558

Total Families
Served
98

Car Seat Checks
Performed
14

Personal and Family Health

Women Infants and Children (WIC)

WIC offers a range of supports beyond nutrition assistance, benefiting not only clients and families but also our communities. WIC nurses assess developmental and psychosocial needs, providing referrals to home visiting programs. We track growth, refer to a registered dietitian, and offer breastfeeding support through a peer counselor, lactation consultant, and supplies like breast pumps. Additionally, we assess lead screenings, immunizations, and iron levels, helping to address client needs in conjunction with medical providers. In FY 2024, WIC redeemed \$503,207.56 in benefits throughout LMAS, up from \$453,175.22 in FY 2023, contributing to our local economy.

WIC Clients
1,248

Lead Screens
249

Nutrition Education
Services Provided
1,475



1,931
Total Immunizations
Administered

688
Flu Shots

534
COVID-19
Immunizations

Immunizations

LMAS continues to immunize pediatric, adolescent, and adult clients, making every effort to get them caught up on immunizations in a timely and opportunistic manner. We are working to restore pediatric and adolescent vaccination coverage rates to pre-pandemic levels. By offering combination vaccines, we maximize protection with fewer shots. Additionally, we schedule clinics at satellite locations to reduce travel barriers for our clients.

Family Planning

153
Unduplicated Clients

46
Pregnancy Tests

97
Sexually Transmitted Infection (STI) Tests

42
CDL Visits

Condoms Dispersed
500

Contraceptives Dispersed
Excluding Condoms
235



The LMAS Wear One Campaign launched on Mackinac Island in June 2024 to increase free condom availability, raise awareness, and promote condom use. Its goal is to reduce STIs and unplanned pregnancies by eliminating barriers like cost and access.

Personal and Family Health

Hearing and Vision

LMAS has one hearing and vision technician who travels across all four counties to screen children from preschool through 12th grade. A one-time funding increase of \$12,000 allowed LMAS to purchase a new audiometer for the hearing program and a Bling vision scanner. The audiometer replaced the outdated equipment, while the new vision scanner aids in diagnosing strabismus and amblyopia in children who are nonverbal or unable to follow typical screening procedures.

1,217
Hearing Screens
and
2,266
Vision Screens



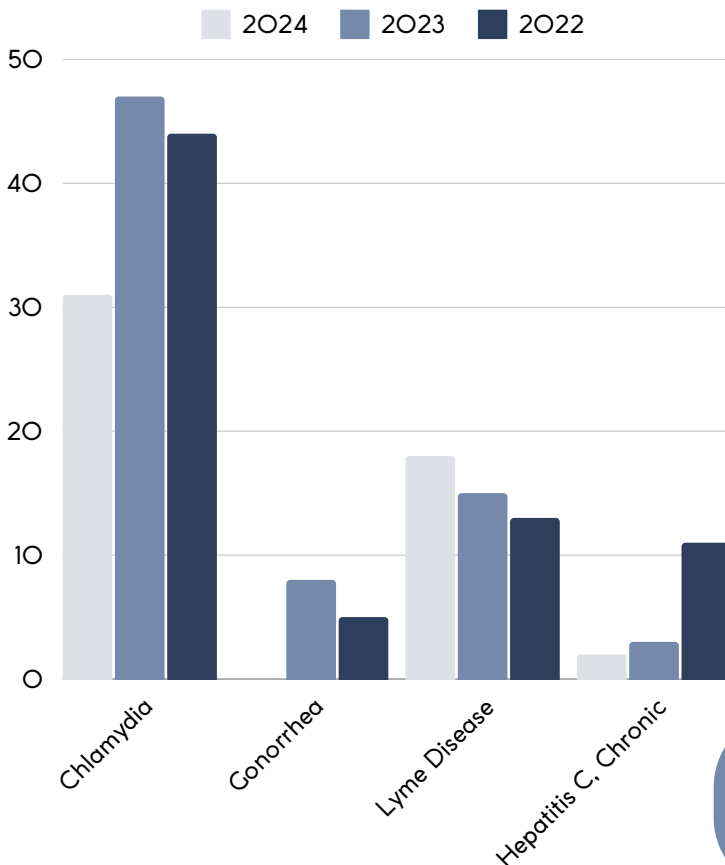
Kindergarten Oral Health Assessment

For the 2024-2025 school year, Michigan has made kindergarten oral health assessments mandatory for students entering kindergarten. After screening, LMAS's registered dental hygienist follows up with the parents of students suspected of having decay, assisting families in finding a dentist and scheduling appointments as needed.

200
Screenings Provided



Communicable Diseases in Luce, Mackinac, Alger, and Schoolcraft Counties



Children's Special Health Care Services

- LMAS caseload increased by 43 clients, with 20 clients age 21 and older
- Plan of Cares increased by 7%
- Care coordination increased by 18%
- Staff continue to meet unique client needs, including referrals, equipment, prescription medications, and travel/lodging reimbursement.

Breast and Cervical Cancer Control Navigation Program

9 clients were enrolled in the program in FY 2024. This program provides low-income women with access to breast and cervical cancer screening services.

TB Tests
Performed
79

Rabies Potential
Exposure
Prophylaxis
2

Animal Bites
Investigated
91

Environmental Health

The Environmental Health (EH) Division works to protect the public from waterborne, foodborne, and vector-borne diseases through permitting, inspecting, and education. The division manages various programs, including food service sanitation, water supply, sewage disposal, campgrounds, soil erosion, swimming pools, rabies, complaint investigation, radon, and beach monitoring.

Key Accomplishments:

- Conducted E. coli monitoring at 6 Great Lakes beaches and 2 inland lakes beaches.
- Received a grant through the National Environmental Health Association to work towards conformance with the FDA National Retail Food Program Standards in our Food Service Program.
- Assisted the Michigan Department of Environment, Great Lakes, and Energy (EGLE) with the identification and management of a Harmful Algal Bloom in Brevort Lake, Mackinac County.
- Hosted a Report Writing training by the Michigan Department of Agriculture and Rural Development in Luce County for food safety program inspectors.
- Participated in the Sars-CoV-2 Epidemiology-Wastewater Evaluation and Reporting (SEWER) Network, with 7 participating municipal sewage systems in the program, tracking wastewater data for public health insights.
- Participated in a Private/Type 3 Well Program review with EGLE, ensuring that community water supplies meet safety standards.
- Engaged in a Non-Community Public Water Supply Program review with EGLE, supporting the protection of public water sources in non-residential settings.
- Participated in an Accreditation Technical Advisory Review in the Food Service and On-site Wastewater programs.
- Investigated and reported to the Michigan State Police on a physical contaminant (blade) found in food served from a licensed food service establishment
- Successfully planned and hosted a training session in the Luce County Office conference room for licensed septic system installers to maintain their continuing education credits.



Environmental Health

ENVIRONMENTAL HEALTH STATISTICS

216

Food Service Inspections

- 136 Fixed Food Inspections
- 154 Temporary Food Inspections



Sanitarians inspected food service establishments on Mackinac Island.

80

Campground Inspections

5

Temporary Campground Inspections

50

Radon Kits Distributed

- Sewage Disposal Services
- 333 Sewage System Site Evaluations
 - 282 Sewage System Permits
 - 210 Sewage System Final Inspections

8

Beaches Actively Monitored

16

Swimming Pool and Public Spa Inspections

3

Body Art Facility Inspections

19

Total Daycare or Adult Foster Care Inspections

184

Water Supply Site Evaluations

179

Water Supply Permits

11

Existing Sewage System Inspections

Soil Erosion

- 109 Initial Site Evaluations and Permits Issued
- 315 Construction Inspections

3

Existing Water Supply Inspections

Complaint Investigations

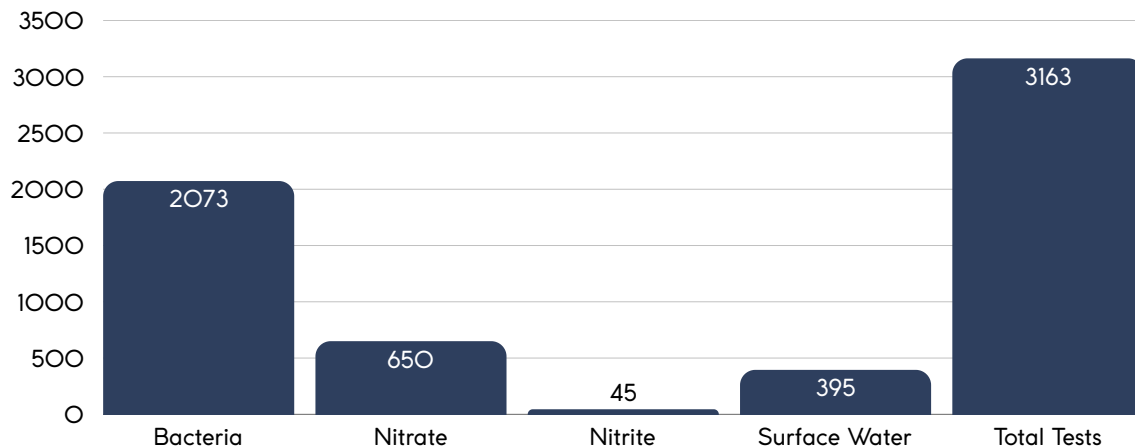
- 11 Septic Complaints
- 3 Well Complaints
- 13 Food Service Complaints
- 1 Soil Erosion Complaints



Regional Laboratory

WATER LABORATORY

- Onboarded Nitrite testing in August 2024.
- FY 2024 marked the busiest year to date, with nearly 500 more tests conducted than in FY 2023.
- For the first time, the program surpassed 3,000 tests in a single fiscal year.
- Attended the Great Lakes Beach Association Meeting



	FY 2024
COVID-19	12
Influenza A/B	8
RSV	8
C. trachomatis (Chlamydia)	90
N. gonorrhoeae	90
Trichomonas	90
Hepatitis C	1
Glycohmeoglobin (A1c)	2

CLINICAL LABORATORY

- Onboarded Waived A1c testing in June 2024.
- The Clinical Lab facilitated the use of the Mobile Lab unit at various community events across the district, including parades, fairs, medication take-back days, car shows, and more.
- Completed all proficiency testing with 100% accuracy, ensuring high standards of quality and reliability in lab results.
- Attended the Association of Public Health Laboratories Annual Conference



Public Health in Action

LMAS District Health Department places a strong emphasis on community involvement. In FY 2024, LMAS employees dedicated over 90 volunteer hours to local events. LMAS staff actively participated in a variety of happenings throughout the area. These included the St. Ignace Car Show, Manistique's Fourth of July Parade, Project Backpack events in Newberry and St. Ignace, health fairs, the Alger County Fair, and the Garfield Township Fire Department's 60th Anniversary Celebration. LMAS remains eager to partner with community organizations and have our Mobile Unit at local events to offer valuable services and resources.



Notes of Appreciation

The Hearing and Vision Tech came to our school for Kindergarten Round Up. She was on time, very personable, worked well with the children and knew her job well.

My call was answered very promptly and professionally. The EH Clerk was able to assist with all my questions and concerns and was very knowledgeable and willing to retrieve answers.

The Breastfeeding Peer Counselor was incredible. When my first pump stopped working, she quickly helped me get set up with a new one, ensuring that my pumping schedule wasn't interrupted. She was always available when I had questions.

The Health Educator provided lessons with Botvin's Life Skills to our 6th, 7th and 8th grade students. She was wonderful with the kids, made meaningful relationships, had great communication skills and brought positive energy into the classroom.

We appreciate how staff treated our situation since it was so late in the season.

We love everyone in the WIC office. The clerk's welcoming smile is always appreciated and the nurse's encouragement is so helpful, these ladies are an asset to our community.

She was so helpful when we came to fill out paperwork for our well and septic system, and went above and beyond all of our expectations. She is a courteous, knowledgeable and a pleasure to work with.

The EH Clerk was extremely helpful. She was quick to return calls and provide information that helped to resolve my informational inquiry.

The PFH Clerk was very welcoming when I walked in the door. She had a smile on her face and asked if I had any questions. The nurse explained everything very well during the appointment. She was engaging and listened to my questions and concerns and thoroughly explained everything. Overall these two ladies were very helpful from the moment I walked in the door to when I left.

Contact Us

www.lmasdhd.org



Luce County
14150 Hamilton Lake Road
Newberry, MI 49868
Phone: 906-293-5107
Fax: 906-293-5453



Mackinac County
749 Homback Street
St. Ignace, MI 49781
Phone: 906-643-1100
Fax: 906-643-0239



Alger County
E9526 Prospect Street
Munising, MI 49862
Phone: 906-387-2297
Fax: 906-387-2224



Schoolcraft County
300 Walnut Street, Room 155
Manistique MI 49854
Phone: 906-341-6951
Fax: 906-341-5230

We care about what you think. Complete our Customer Satisfaction Survey to let us know what matters to you and how we can serve you better.





lmasdhd.org

[Facebook.com/LMASDHD](https://www.facebook.com/LMASDHD)